

# CAPin GHG (2022-2024)

## Climate action plans inventories: policies to reduce GHG emissions at the city level



### Environmental policies research group

#### Charlotte HALPERN



Researcher in political science at Centre for European Studies and Comparative Politics (Sciences Po). Her research focuses on the transformations of

public policy in a comparative perspective, mainly in Europe and South America. She is a member of the board of the Earth Politics Center.

#### Ben William CASHORE

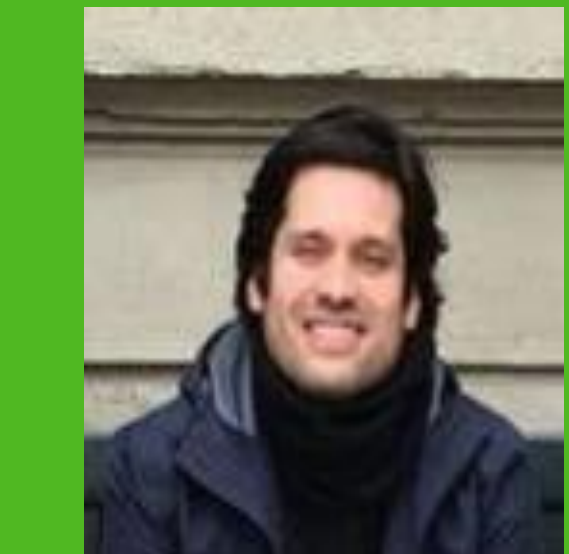


Li Ka Shing Professor in Public Management at the Lee Kuan Yew School of Public Policy (NUS) and Director of the Public Policy Initiative for

Environment and Sustainability (PPIES). His research specialises in global and multi-level environmental governance, comparative public policy and administration, and transnational business regulation/corporate social responsibility. His geographic focus includes Southeast Asia, North America, Latin America and Europe

#### Research team:

##### Alvaro ARTIGAS



Associate researcher at Sciences Po, CEE and member of the Cities are Back in Town cluster at the Urban School.

His research specializes

in sustainable public services and infrastructure promotion programs.

**Sophia NOEL**, Research assistant, LIEPP)

**Gao PENG**, Research assistant, Lee Kuan Yew School of Public Policy.

**Sebastian SEWERIN**, research associate at Institute for Environment and Sustainability, LKYSPP - NUS

### Acknowledgement

CAPin GHG is funded under the Université Paris Cité – NUS Call 2021.



The CAPinGHG research consortium brings together a team of researchers from the IES LKY National University of Singapore and from LIEPP environmental policies research group, in Paris. The main goal is to provide a comparative framework of analysis for environmental transitions building on a cross-regional comparison of local climate action plans. The study of GHG inventories in particular was privileged in its local metropolitan expression, in order to identify commonalities in the policy process, blindspots and specific issues pertaining to the interaction of local, national and supranational expertise in the enactment of these. The intersection of scientific expertise with local teams of policy makers and the role played by international ODA related agencies was an equally important concern. By looking into the stabilization of these processes and the institutionalization of policy fields and procedures this research objective equally points to how environmental-based local responses have the potential to stabilize the overall production of environmental responses at the national level and potentially contribute to stabilize in a « thermostatic » fashion the global challenge of climate change.

#### Three main objectives:

1. Assess the **disconnect** between ambitious environmental policy objectives and the way they are made material through local climate plans and the selection of GHG inventories.

1. Account for the **disruptive impact resulting from the setup of new services** (e.g., distributed energy), **technologies** (e.g., H2, electric mobilities) and **stakeholders of these new services** (e.g., global platforms, development entities such as AIIB) and the extent to which GHG inventories account for it.

1. Examine **evolving environmental policy capacities** (whereas national or local) in relation to setting local climate action plans and select and adjust GHG inventories.

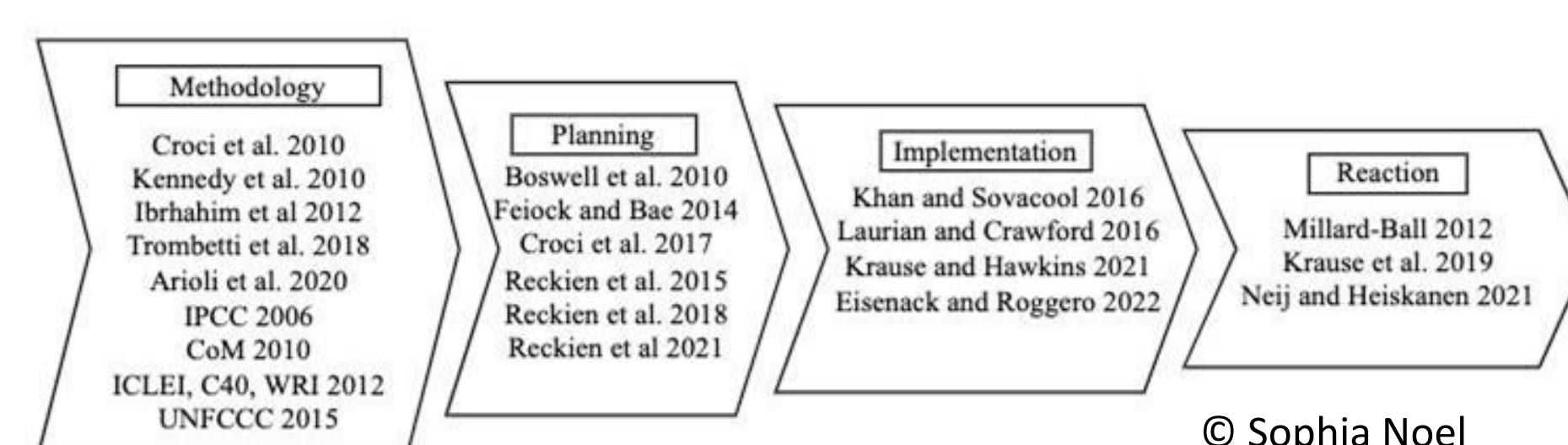
#### Main assumption:

GHG inventories operate as public policy instruments and as such, have effects of their own. Often introduced as part of local climate action plans, they contribute to assigning policy priorities, targeting sectors considered instrumental to much needed environmental change, and to the sidelining of those deemed less prominent in this endeavor.

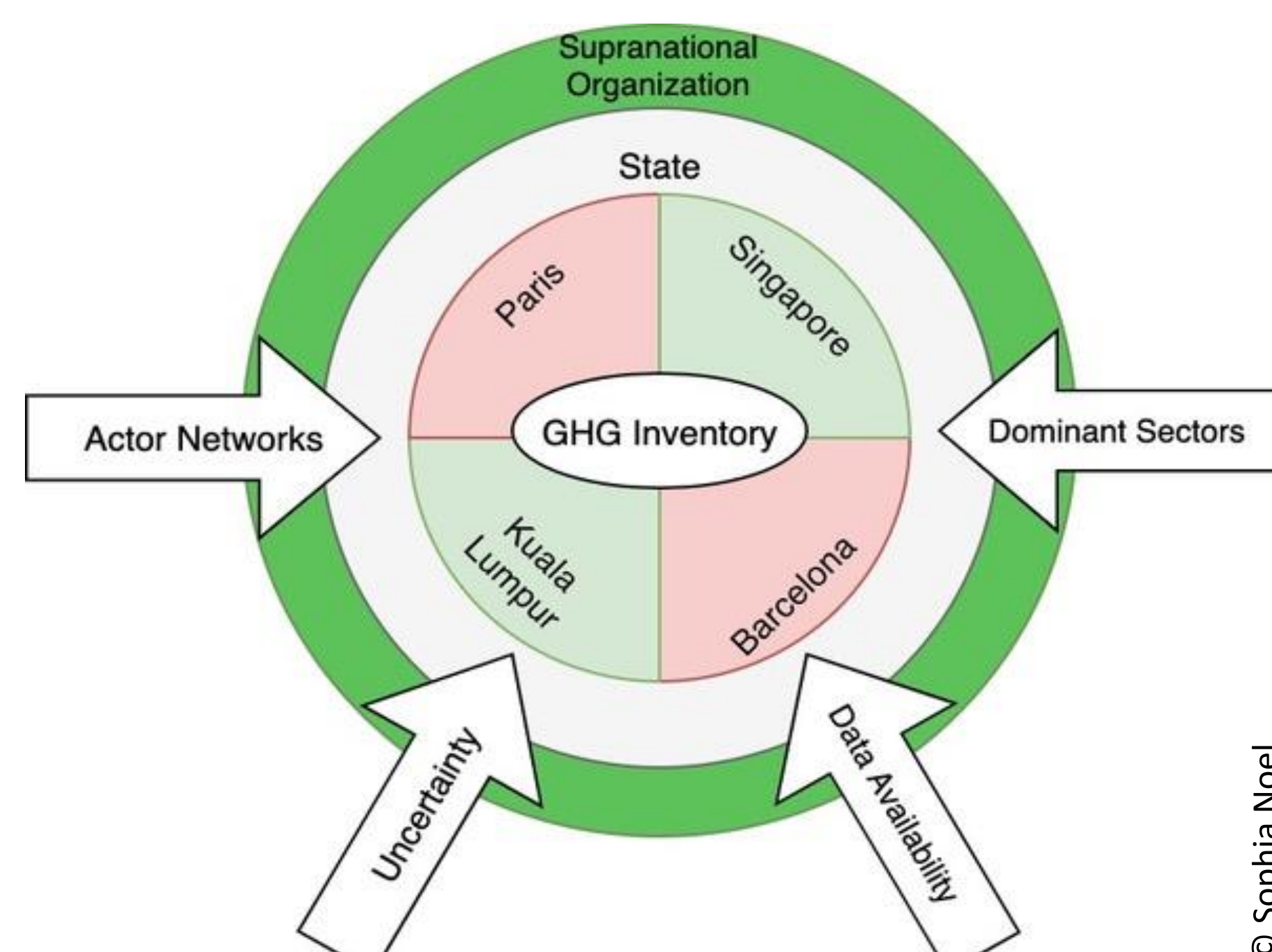
#### Exploratory literature review

An extensive literature review was conducted prior to the first field research missions. It comprised research on scope determining mechanisms pertaining to GHG emissions and air pollution in international peer-reviewed journals, as well as more targeted reports by the WMO (World Meteorological Organization) and UNFCCC (United Nations Framework Convention on Climate Change). The overall objective was to narrow down the perimeter of inventories, to streamline analytical categories and ponder the importance of key variables for the research.

The figures below provide an illustration of key findings.



#### Analytical framework



#### Comparative method and case studies analysis (small-n)

In order to contribute to current debates about regional policy styles, the CAPin GHG project examines four main relevant case studies: in **Western Europe (Paris, Barcelona), and South East Asia, (Singapore, Kuala Lumpur)**. Each case contributes to the understanding of a specific dimension of GHG inventories in the context of local climate action plans.

#### Findings and next steps

Background and Field research helped scoping the research, proceeding to the preliminary assessment of available datasets and expert-based research on the topic and the constitution of viable networks that could potentially nourish ulterior research projects stemming from CAPinGHG. Interviews helped identifying specific institutional dynamics pertaining to local climate action plans policy design and their operationalization problems.

- A **1-year grant extension** to consolidate research activities in Singapore / Kuala Lumpur, including 1) Joint research in Singapore in coordination with the URA (Urban Redevelopment Agency of Singapore) and fieldwork in Singapore: drawing on the robustness of the networks that were articulated during the scientific events and fieldwork conducted in the current and previous calendar year, the CAPinGHG team will resort to them in order to provide a first mapping and policy analysis of GHG inventories in Singapore ; 2) A Paris-Singapore workshop on Singapore's GHG accounting strategy at the Urban Level (URA) to finalize the fieldwork, and some focus on publications.
- The **NUS-Paris interdisciplinary working group on urban heat** was set up, including senior researchers from NERI, IES, LIEPP and CPT, to submit an application to the MERLION Programme, to follow up on CAPin GHG, by extending the analysis on adaptation and mitigation in local climate action plans and their operationalization to urban heat island.

#### Main outcomes and activities 2023:

- ICPP 6 Toronto, two sessions : one chaired by Ben Cashore with C. Halpern as speaker, one co-chaired by C. Halpern and P. Zittoun, with a presentation by C. Halpern/ A. Artigas and B. Cashore as discussant.
- Research visit by B. Cashore at Sciences Po, July 2023, with a presentation at CEE-LIEPP.
- Research seminar at Centre Marc Bloch in Berlin 24/04/2023 with presentation by C. Halpern;
- NERI-CPT workshop at NUS 25 & 26/04/2023) with presentation by A. Artigas and C. Halpern
- Teaching activities at LKYSPP-NUS and at PSIA-Sciences Po.
- Workshop at the IES LKY with URA (Fall 2024)

#### Workplan 2024

- **Field research:** Singapore (May 2024), Paris (September 2024).
- **Networking activities :** Singapore (May 2024), Paris (Fall 2024, Merlion workshop) and in the Philippines.
- **Visiting fellow (TIERED project) :** David Gordon (University of California, Santa Cruz), 1 month (Nov. 2024).